

Appraisers International Society

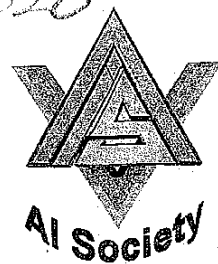
# Dennis Blacklaws Ltd

LOWER HUTT: 10 Laings Road, Lower Hutt, 5010, New Zealand  
Phone & Fax (04) 566-3668

Email: dennis.blacklaws@gemlink.co.nz Website: www.gemlink.co.nz

Resident Appraiser: Dennis D. Blacklaws

Gemologist - Diamond Grader - Jewellery Appraiser



© Copyright 2012 All rights reserved  
Dennis Blacklaws Ltd

Appraisal prepared for  
Address

AppraisalPlus DBL06001

Ref No: 18507/DB/LH2/1916

Date: 3 September, 2012

## ARTICLE

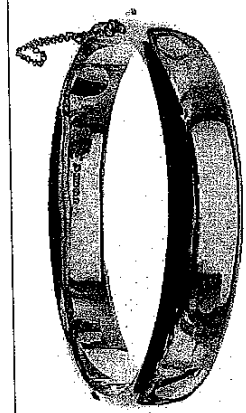
40. Imported, - Branded,- Period - circa George V,  
(Reproduction) Cast Fabricated, Assembled, with  
traditional/classical style (Snap) & (Joint) design  
Bracelet.

Bracelet Metal composition analysed 9ct Red Rosé gold alloy  
and stamped with 9 .375 with 1916 London style hallmark  
and makers mark JS, presented with plain hollow (wax-filled)  
and half (1/2) round, Parallel, and Oval shaped, polish-finish  
with 66.00mm x 13.04mm → x 4.69mm dimension hinged  
and Comfort style bangle settings.

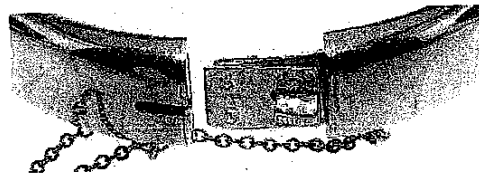
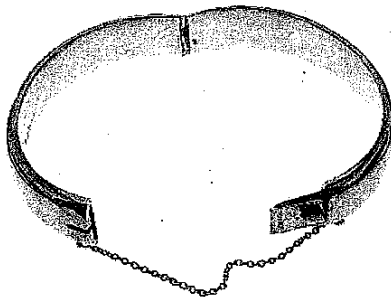
Bracelet presented with Push-In and Invisible style clasp  
type assembly, fitted with single, Fine and Trace style link  
style Safety-Chain, and hinge attached to one side.

Bracelet presented with hand-carve engraved inscription ;  
'Lilian E Williamson 16/12/19'  
applied across top of outer circumference of top half bangle  
setting.

Bracelet dimensions 66.00mm x 4.69mm → of (0:1/2") width  
Bracelet Total Weight (21.00grams) with Total Metal Weight (15.00grams).  
Bracelet presenting as Safe condition and general overall surface wear.  
Photographs (X2/1.).



R.V.N. \$. N/A  
I.V. \$3,100.00



CONTINUED ...//

51/52



*Dennis D. Blacklaws*  
Dennis D. Blacklaws

"This Appraisal has been prepared in conformity with accepted professional eth of Appraisers International Society™ (US/ The Jewellery Appraisers Society of N.Z.



Appraisers International Society

# Dennis Blacklaws Ltd

LOWER HUTT: 10 Laings Road, Lower Hutt, 5010, New Zealand  
Phone & Fax (04) 566-3668

Email: dennis.blacklaws@gemlink.co.nz Website : www.gemlink.co.nz

Resident Appraiser: Dennis D. Blacklaws

Gemologist - Diamond Grader - Jewellery Appraiser

Appraisal prepared for  
Address



© Copyright 2012 All rights reserved  
Dennis Blacklaws Ltd

AppraisalPlus DBL06001

Ref No: 18507/DB/LH21916

Date: 3 September, 2012

## ARTICLE

41. Branded,- Fabricated, Hand-Crafted, -  
option; (Ladies) and traditional style  
Wedding design Ring.

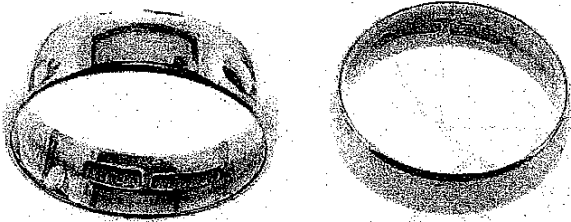
Ring Metal composition analysed as 18ct Red *Rosé* gold  
*alloy*, presented and *stamped* with 18ct and makers mark  
*LLoyd*, presented with Red *Rosé* gold, plain and  
*polish-finish* style *band*.

Ring presented with plain polish *inside* and *outside* of  
*complete* design *circumference* of 5.56mm→ x 1.05mm→  
dimension *half* (1/2) round, and *Parallel* with *Seamless*  
style *base* band.

Ring Total Weight (4.10grams).  
Ring presenting as Safe condition and general overall surface wear.  
Finger size (N) L/E. Photographs (X2/1.).

R.V.N. \$1,600.00

I.V. \$1,360.00



Appraisal No 21916 Economic Factors for item(s) 1 - 41

Total Value R.V.N. N.Z. \$88,230.00  
I.V. N.Z. \$116,480.00

N.Z. ONE HUNDRED AND SIXTEEN THOUSAND FOUR HUNDRED AND EIGHTY DOLLARS ONLY.

N.B. Exchange Rate U.S. \$...0.7899 Gold per oz U.S. \$...1656.1 Platinum per oz U.S. \$1513

52/52



*[Signature]*  
Dennis D. Blacklaws

"This Appraisal has been prepared in conformity with accepted professional ethics of Appraisers International Society™ (US) The Jewellery Appraisers Society of N.Z