



Dennis

LOWER H

Email: den

Resic

Gems & Jewellery Specia

Specialist



Appraisal prepared for
Address

AppraisalPlus DBL06001

Ref No: 13950DB/LH24275

© Copyright 2018 All rights reserved
Dennis Blacklaws Ltd

Date: 23 October, 2018

ARTICLE

41. Imported, - Branded,- (European) (Middle-Eastern) Cast/Fabricated, precision-machine/milled, Assembled with contemporary/modernist type (hollow - solid) design (Link) style Bracelet.

Bracelet Metal composition analysed as 9ct Yellow gold alloy, and stamped with 375 style hall/mark with Italy style Guild/mark and 1* AR uno-a-erre style makers/brand type mark and 88KC1 style.

Bracelet presented with Yellow gold, and cut-out and "insitu" and 'Medium' and 'diamond-cut' with "Oval/Twist" style 'hollow', and 'polish-finish', with hinged with 'articulated' and 'Integrated' and 'uniform' and "Sequential" design "Links", and hinge and 'attached' along 'complete' and 'entire' length.

Bracelet presented and fitted with Yellow gold and 'solid' and 'plain' and 'standard' and "Crab-Claw" style "Clasp" type 'device', and hinge and 'attached' to and fitted to one end.

"Link" dimensions;	4.15mm← x 6.28mm→ x 1.00mm‡
"Cap-Link" dimensions;	6.03mm← x 3.06mm→ x 2.29mm‡
"Round" "Link" dimensions; 2 x est	4.25mmØ x 0.85mm‡
"Clasp" dimensions; 1 x est	10.25mm→ x 3.80mm→ x 2.36mm‡

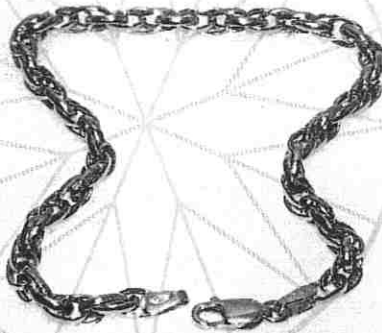
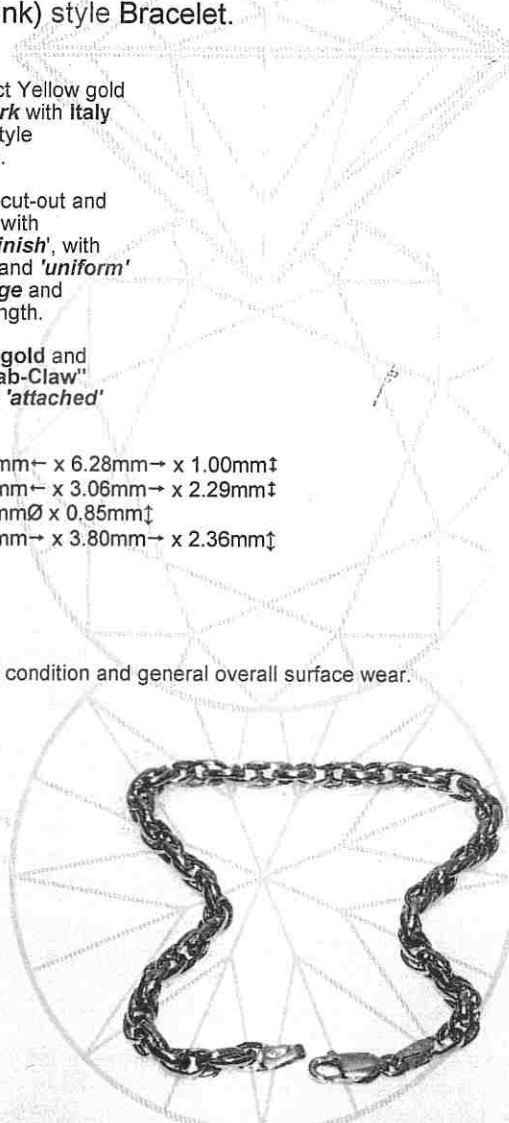
Bracelet of (8.00") length.

Bracelet Total Weight (4.29grams).

Bracelet presenting near as 'New' and Safe condition and general overall surface wear. Photographs (X2/1.).

R.M.V.N. \$...710.00

I.M.V. \$...670.00



CONTINUED ...//

85/86



EDINBURGH ASSAY OFFICE



GIA
GEMOLOGICAL
INSTITUTE OF
AMERICA



THE NATIONAL ASSOCIATION
OF JEWELRY APPRAISERS



[Signature]
Dennis D. Blacklaws

This Appraisal has been prepared in conformity with accepted professional ethics of Appraisers International Society™ (USA) & The Jewellery Appraisers Society of N.Z. Inc.