

87

Valuation For Insurance Purposes Prepared For



Gold Opal Pendant.

Total weight of 3.07 grams.

Nine carat yellow gold stamped 9 CT.



Kite shaped pendant 20.06 x 26.02 x 5.49 mm.

Central pear shaped stone in a rub setting with mill grained edges.

Engraved leaves and a small flower are in the lower surround.

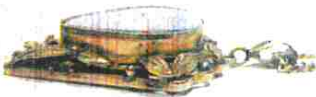
Gold plated silver chain.



Stone: Opal Doublet, Red Pinfire Pattern with small incusions in the face.

Carat: 15.65 x 13.56 x 2.87 mm

Colour: Blue Yellow Green with Red / Orange flashes.



Replacement Value: \$ 1,692.00

This valuation is based on currency and bullion rates on 20 / 08 / 2020.

Stones are not removed from settings therefore carat weights are an estimation only.

Gabriella Petrie
Tasman Bay Jewellers
GAA Cert Diamond Grading

Gold US\$1,939.40/Ounce, 1NZ\$ = 0.6556US\$, 1NZ\$ =0.9139AU\$

